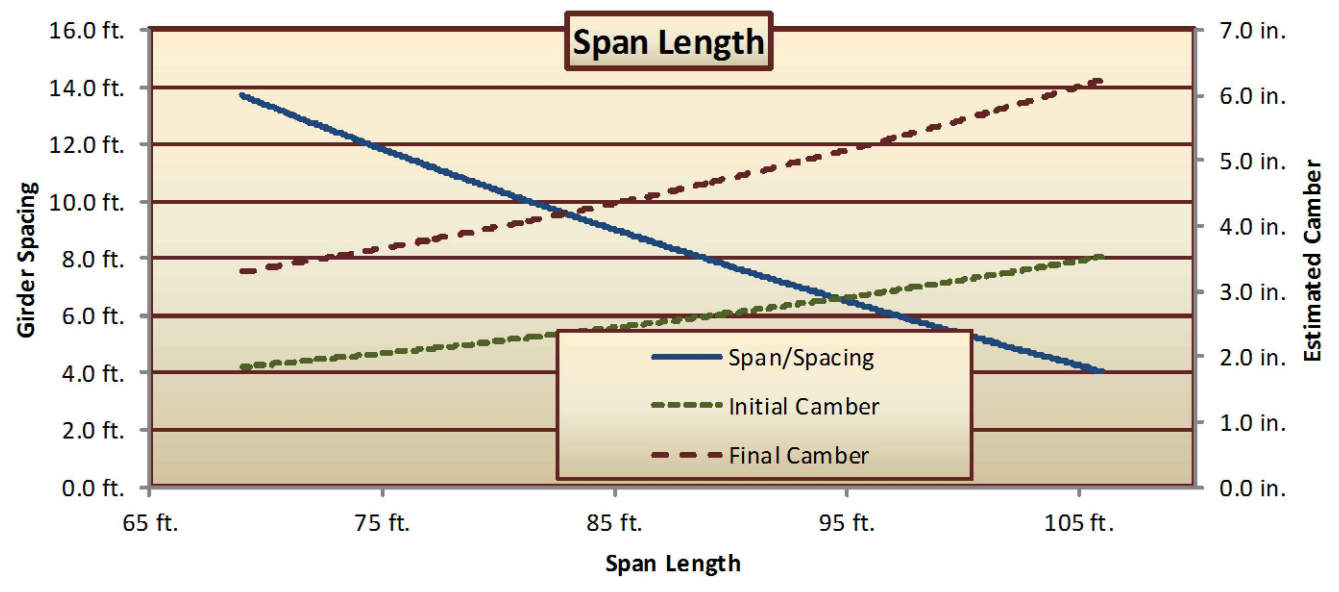


Section Properties
 Area= 654 in.²
 I= 152,960 in.⁴
 Y_b= 21.16 in.
 Y_t= 20.84 in.
 S_b= 7229 in.³
 S_t= 7340 in.³

Use 0.6"Φ, 270ksi, 7 wire, low lax strand
 Table is intended for preliminary sizing
 Assumes f'_c = 9,000 psi & f'_{ci} = 7,000 psi
 Harping holddown force/angle must be less than 4 kips per strand



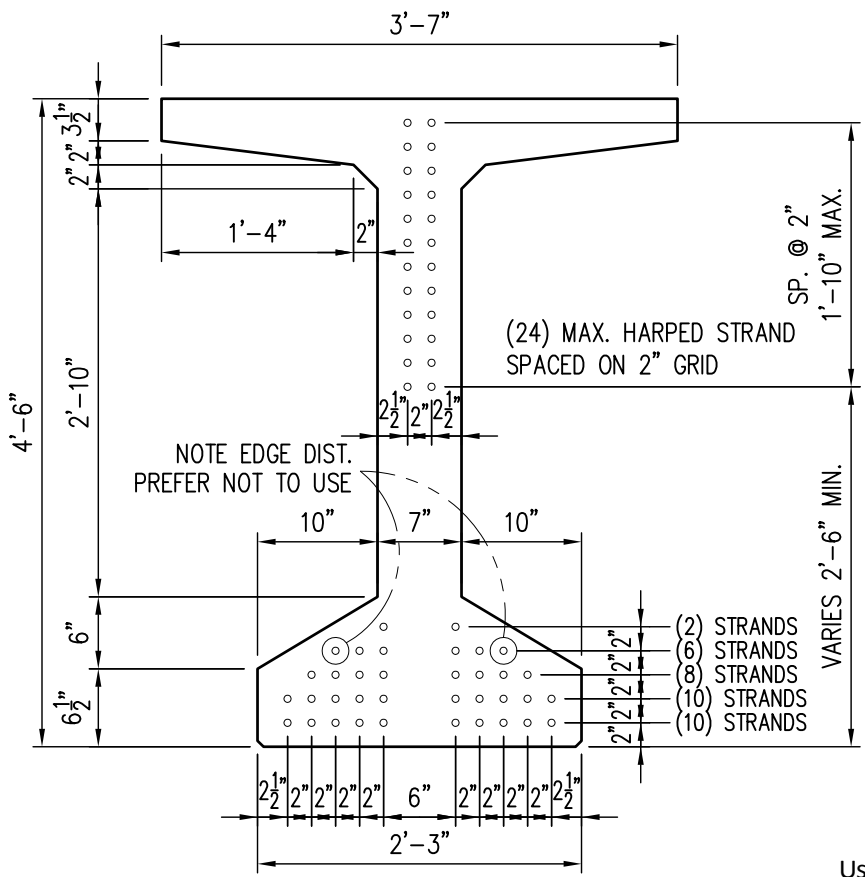
PlumCreek
STRUCTURES
 9160 NORTH MOORE RD.
 LITTLETON, CO 80125
 (303) 471-1569

REVISIONS
 △
 △

DRAWN BY: DPW
 DATE: 03.20.2015
 CHECKED BY: -
 DATE: -

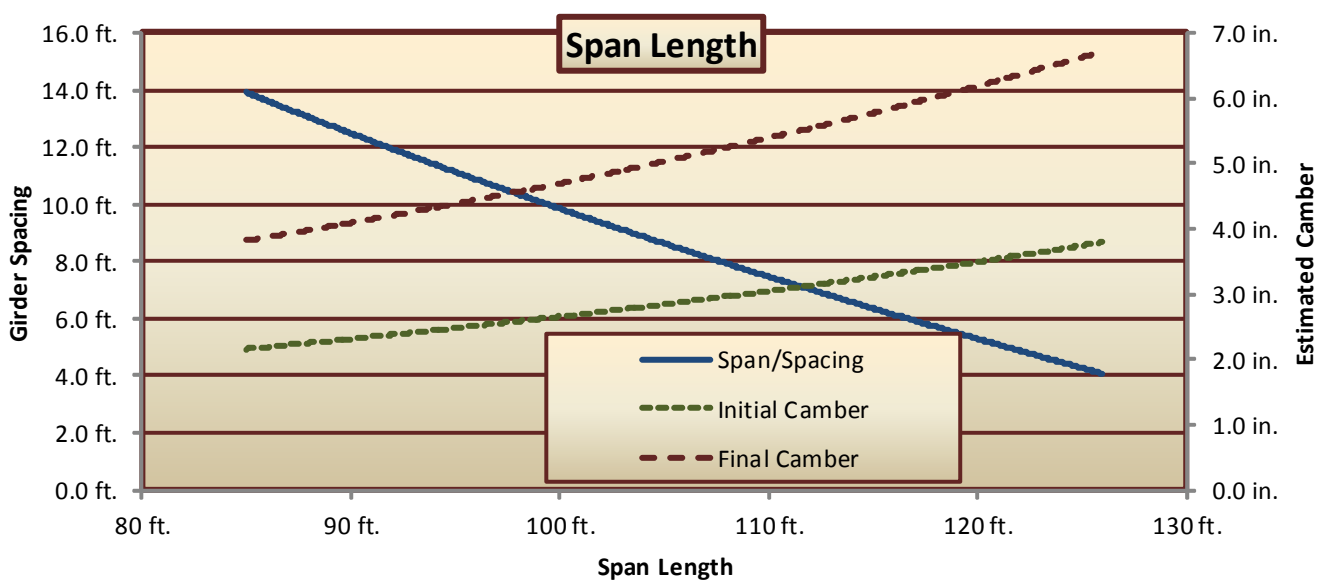
BT-42 SECTION
PROPERTIES

JOB NUMBER
 -



Section Properties
 Area= 738 in.²
 I= 289,056 in.⁴
 Y_b= 26.98 in.
 Y_t= 27.02 in.
 S_b= 10714 in.³
 S_t= 10698 in.³

Use 0.6"Φ, 270ksi, 7 wire, low lax strand
 Table is intended for preliminary sizing
 Assumes f'_c = 9,000 psi & f'_{ci} = 7,000 psi
 Harping holddown force/angle must be less than 4 kips per strand



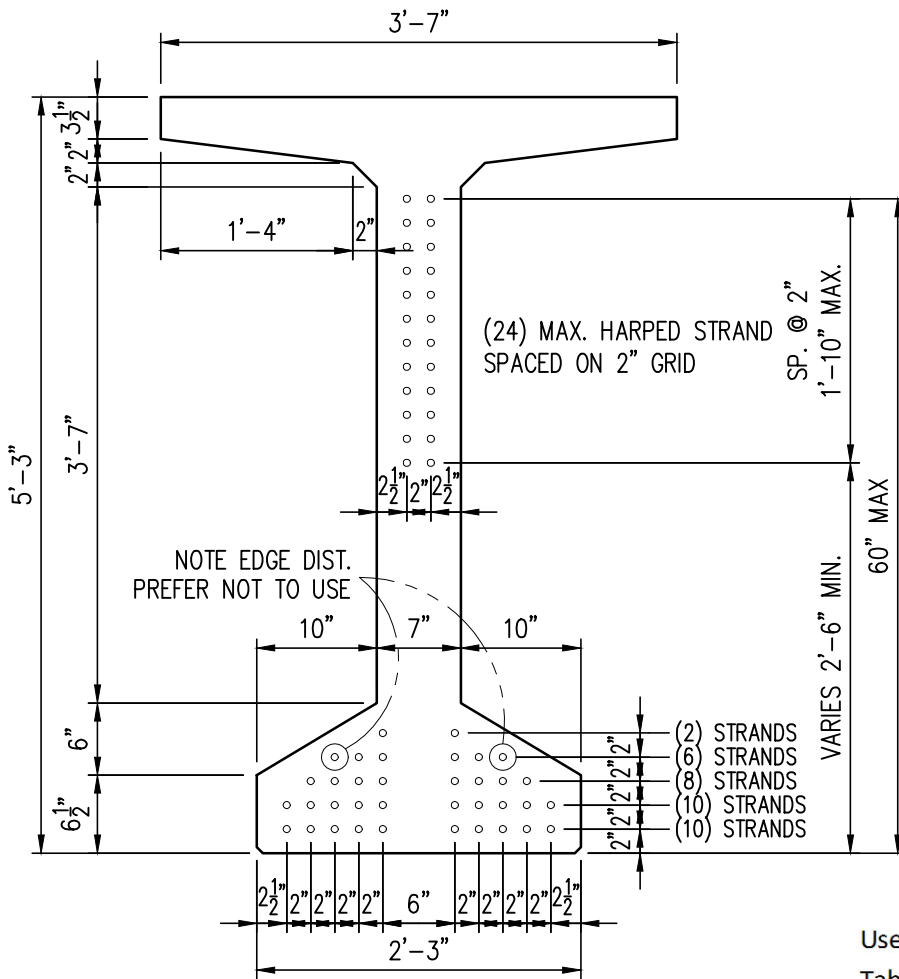
PlumCreek
STRUCTURES
 9160 NORTH MOORE RD.
 LITTLETON, CO 80125
 (303) 471-1569

REVISIONS
 △
 △

DRAWN BY: DPW
 DATE: 03.20.2015
 CHECKED BY: -
 DATE: -

**BT-54 SECTION
 PROPERTIES**

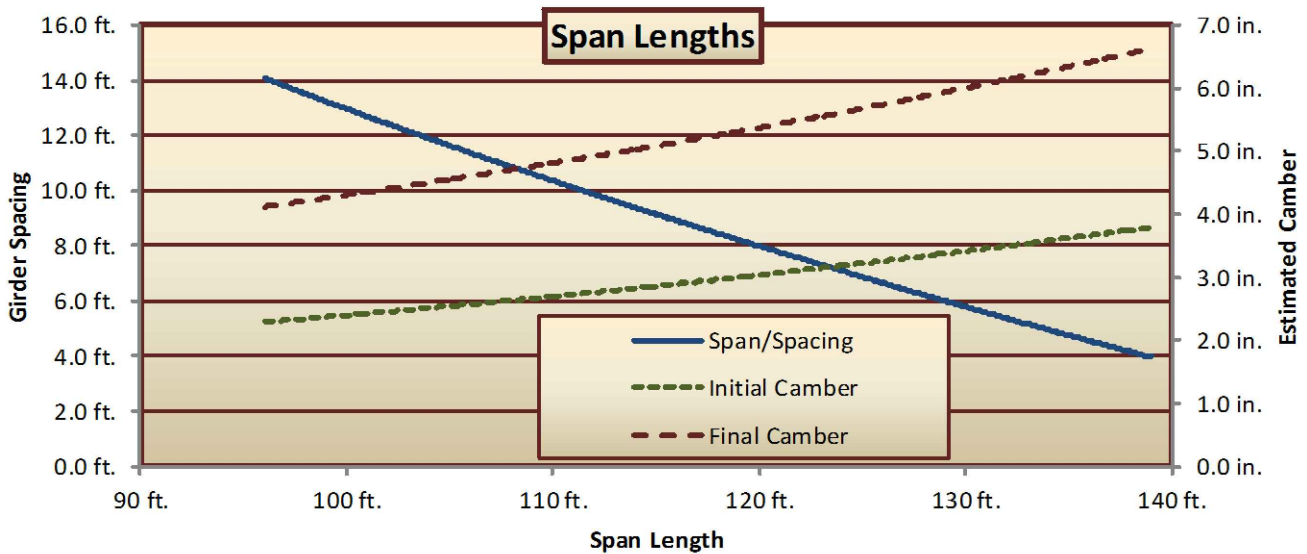
JOB NUMBER
 -

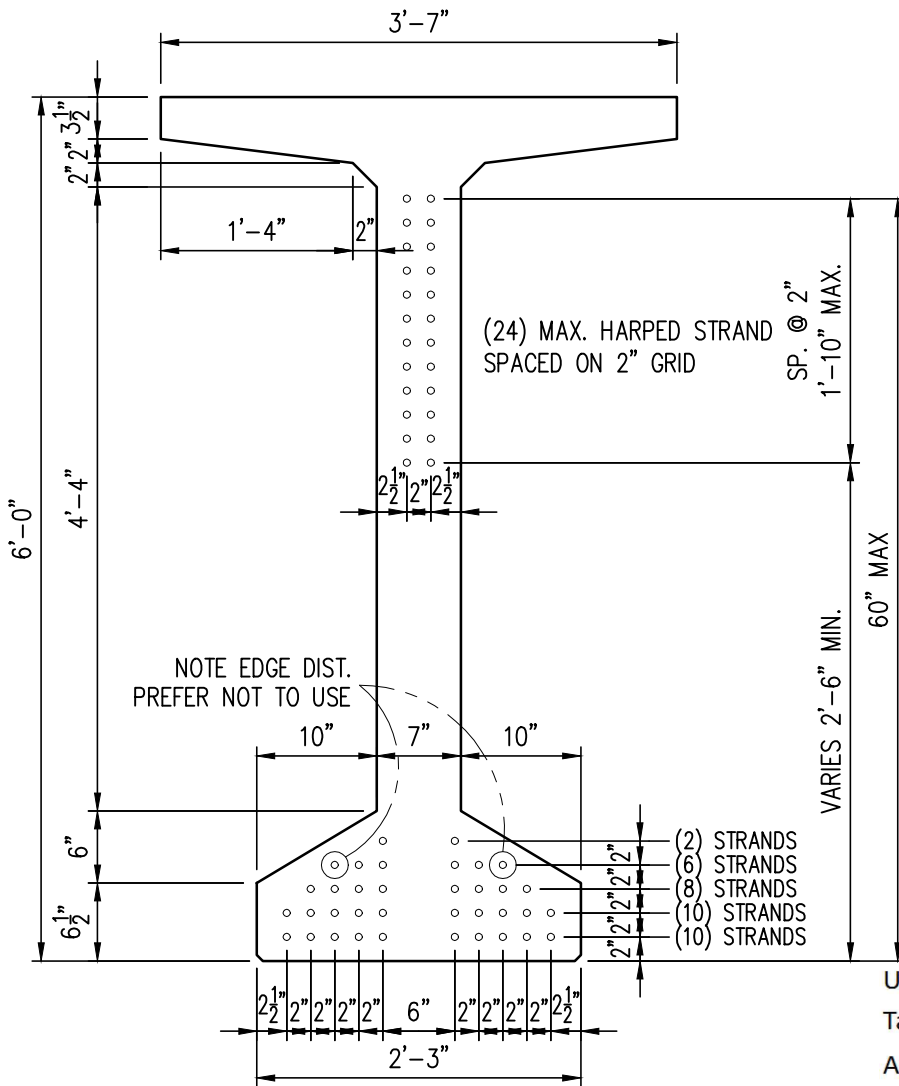


Section Properties

Area= 801 in.²
 I= 425,631 in.⁴
 Y_b= 31.37 in.
 Y_t= 31.63 in.
 S_b= 13568 in.³
 S_t= 13457 in.³

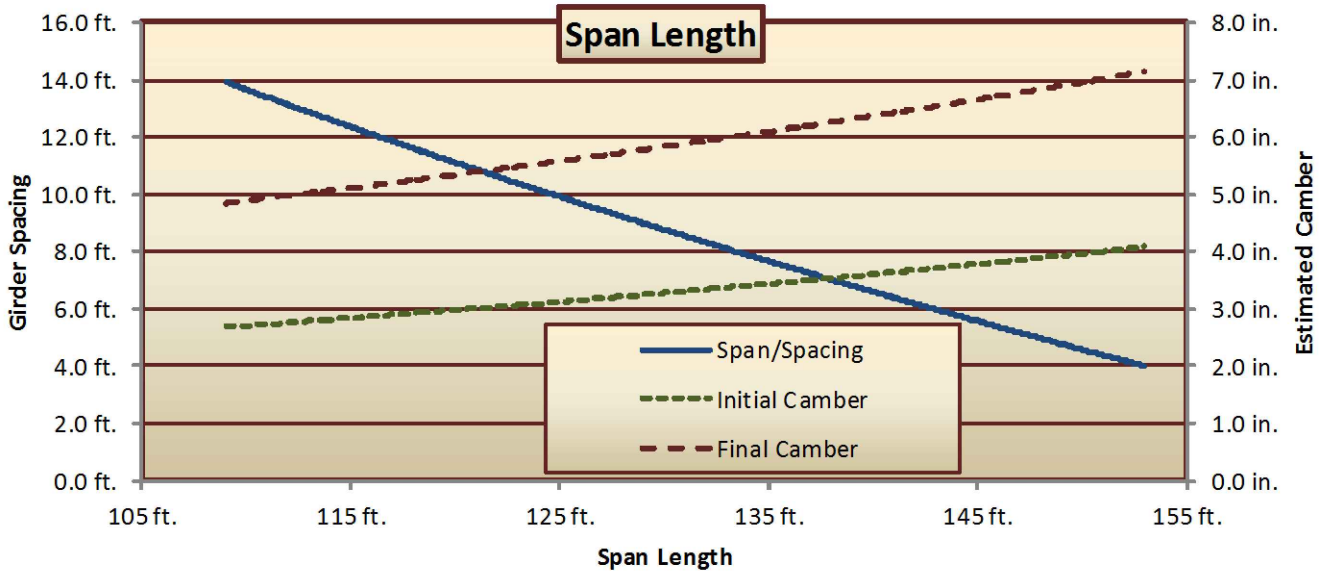
Use 0.6"Φ, 270ksi, 7 wire, low lax strand
 Table is intended for preliminary sizing
 Assumes f'_c = 9,000 psi & f'_{ci} = 7,000 psi
 Harping holddown force/angle must be less than 4 kips per strand





Section Properties
 Area= 864 in.²
 I= 594,937 in.⁴
 Y_b= 35.77 in.
 Y_t= 36.23 in.
 S_b= 16632 in.³
 S_t= 16421 in.³

Use 0.6"Φ, 270ksi, 7 wire, low lax strand
 Table is intended for preliminary sizing
 Assumes f'_c = 9,000 psi & f'_{ci} = 7,000 psi
 Harping holddown force/angle must be less than 4 kips per strand



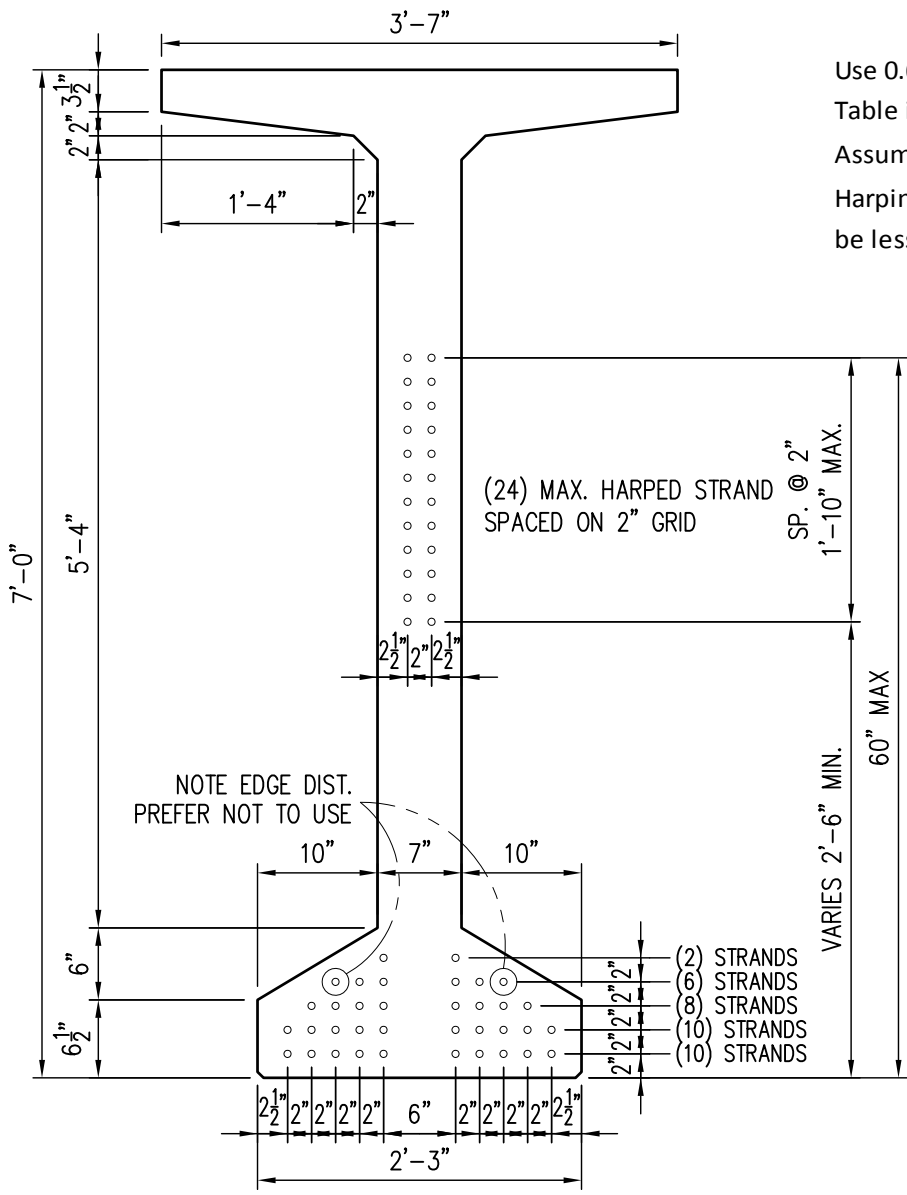
PlumCreek
STRUCTURES
 9160 NORTH MOORE RD.
 LITTLETON, CO 80125
 (303) 471-1569

REVISIONS
 △
 △

DRAWN BY: DPW
 DATE: 03.20.2015
 CHECKED BY: -
 DATE: -

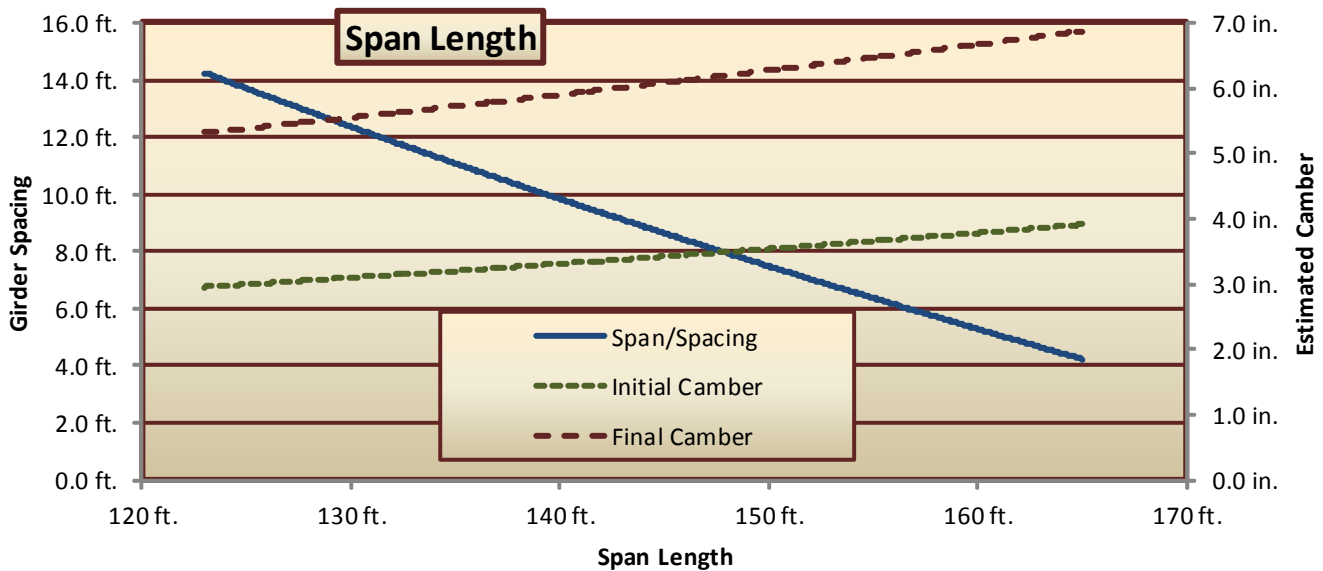
BT-72 SECTION
PROPERTIES

JOB NUMBER
 -



Use 0.6"Φ, 270ksi, 7 wire, low lax strand
 Table is intended for preliminary sizing
 Assumes $f'_c = 9,000$ psi & $f'_{ci} = 7,000$ psi
 Harping holddown force/angle must be less than 4 kips per strand

Section Properties
 Area= 948 in.²
 $I = 875,207$ in.⁴
 $Y_b = 41.66$ in.
 $Y_t = 42.34$ in.
 $S_b = 21008$ in.³
 $S_t = 20671$ in.³



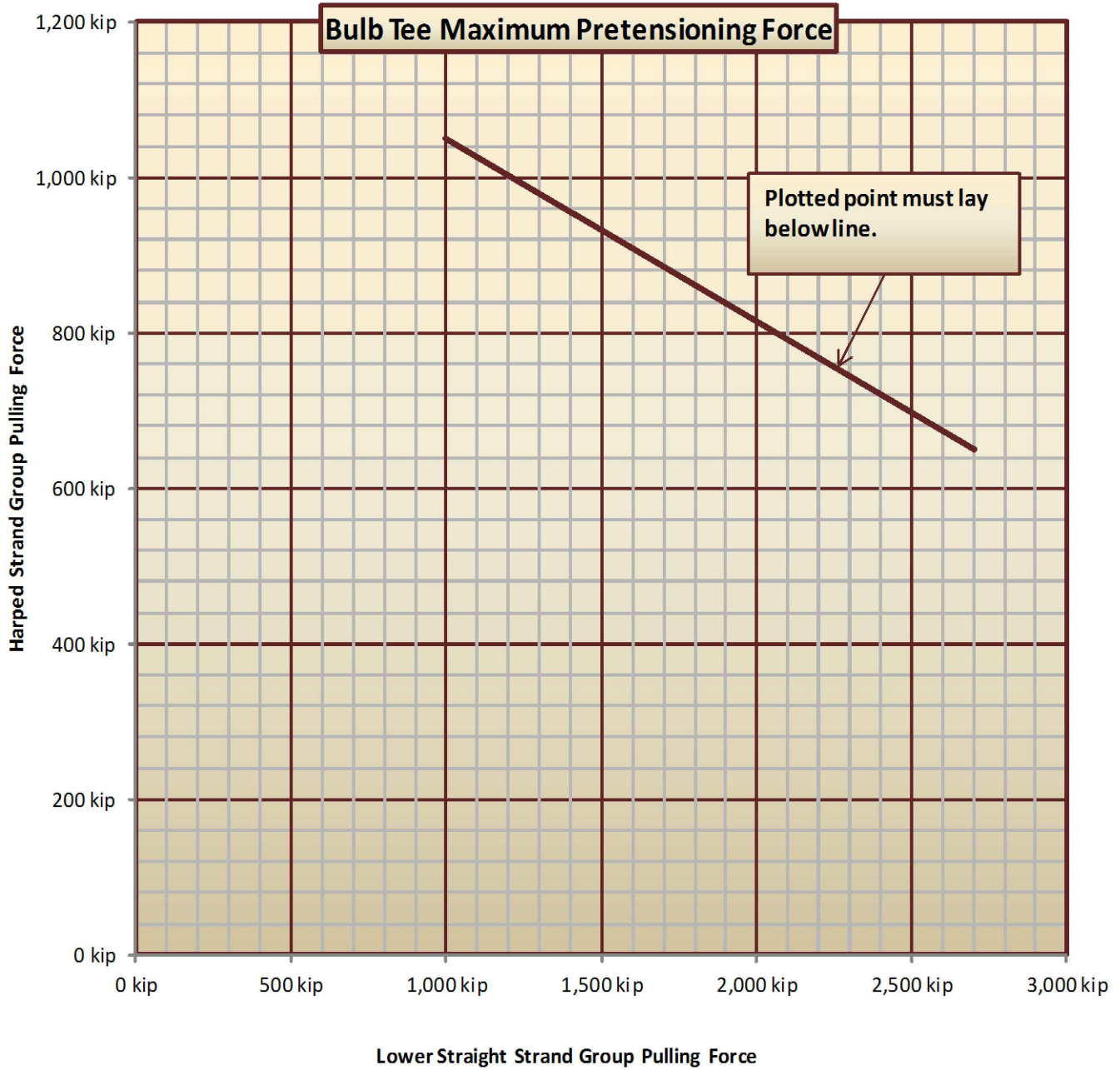
PlumCreek
STRUCTURES
 9160 NORTH MOORE RD.
 LITTLETON, CO 80125
 (303) 471-1569

REVISIONS
 △
 △

DRAWN BY: DPW
 DATE: 03.20.2015
 CHECKED BY: -
 DATE: -

BT-84 SECTION
PROPERTIES

JOB NUMBER
 -



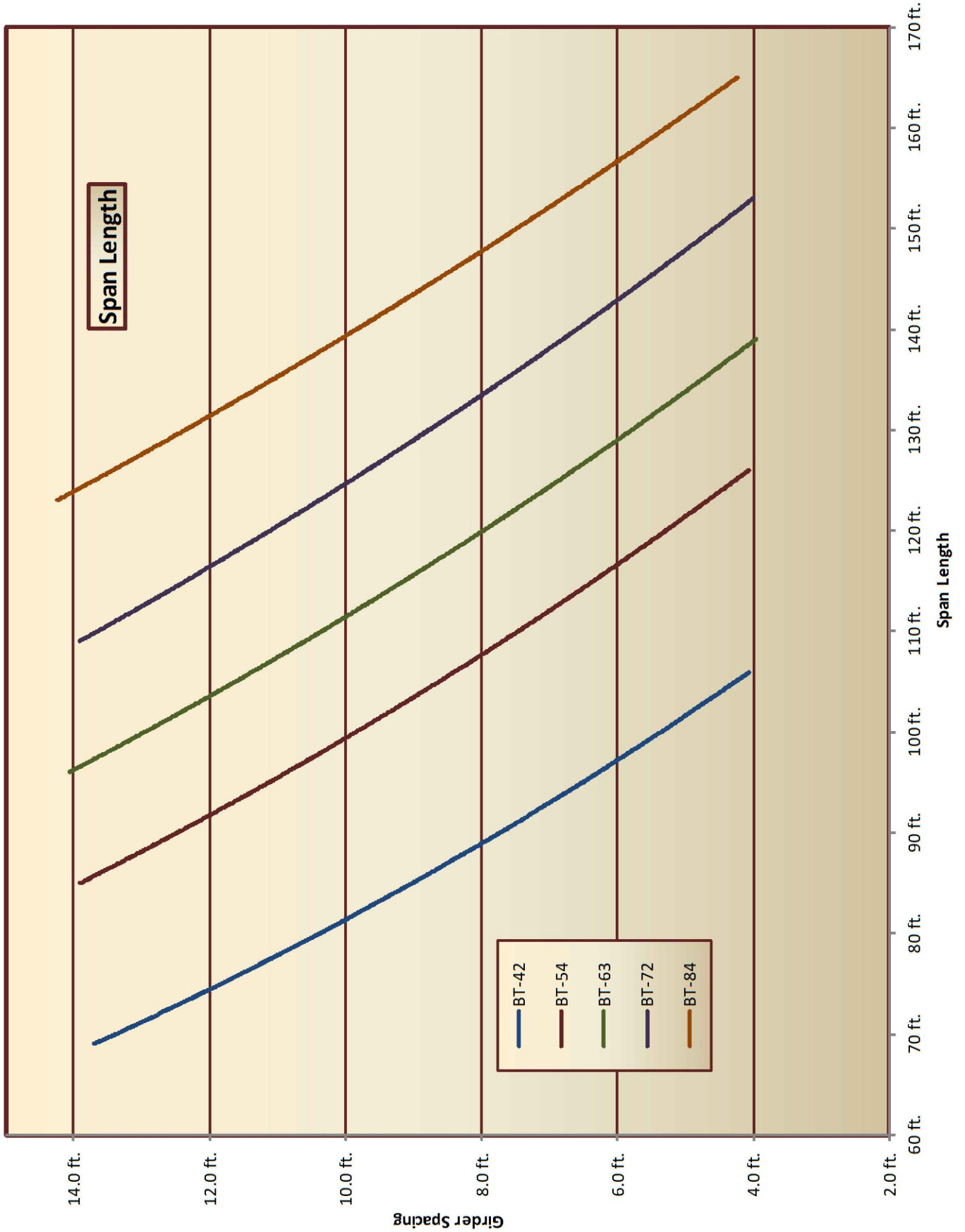
PlumCreek
STRUCTURES
 9160 NORTH MOORE RD.
 LITTLETON, CO 80125
 (303) 471-1569

REVISIONS
 △
 △

DRAWN BY: DPW
 DATE: 03.20.2015
 CHECKED BY: -
 DATE: -

**BULB TEE PULLING
 HEAD CAPACITY**

JOB NUMBER
 -



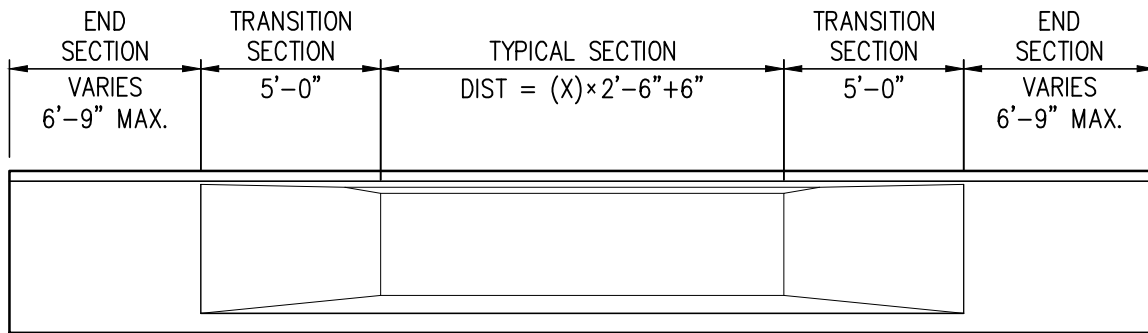
PlumCreek
STRUCTURES
 9160 NORTH MOORE RD.
 LITTLETON, CO 80125
 (303) 471-1569

REVISIONS	
△	
△	

DRAWN BY: DPW
 DATE: 03.20.2015
 CHECKED BY: -
 DATE: -

GIRDER SIZE, SPAN AND SPACING CHART

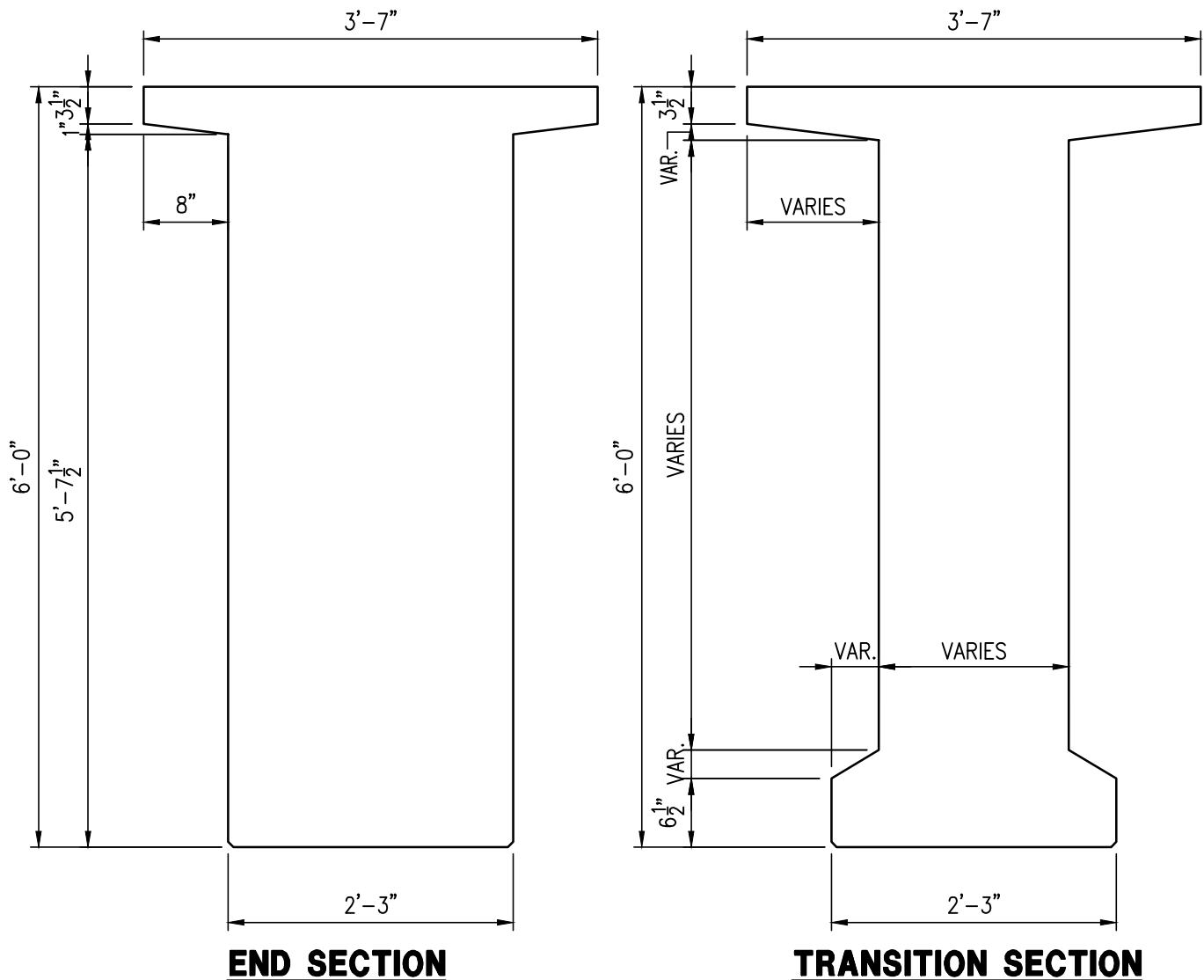
JOB NUMBER
 -



ELEVATION VIEW

NOTES:

- TYPICAL SECTION IS FIXED IN LENGTHS OF 2'-6" AS SHOWN ABOVE WHERE "X" IS AN INTERGER. (E.G. (20)×2'-6" + 6" = 50'-6"
- SEE BT-72 SECTION PROPERTIES FOR STRESSING AND TYPICAL SECTION PROPERTIES.
- CURRENTLY ONLY AVAILABLE IN BT-72 AND BT-42, BT-72 SHOWN, BT-42 SIMILAR.



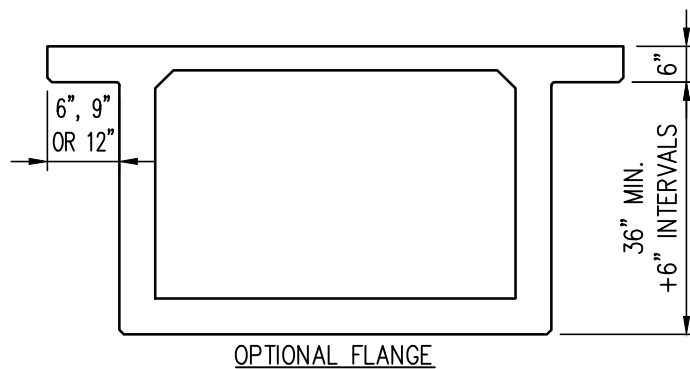
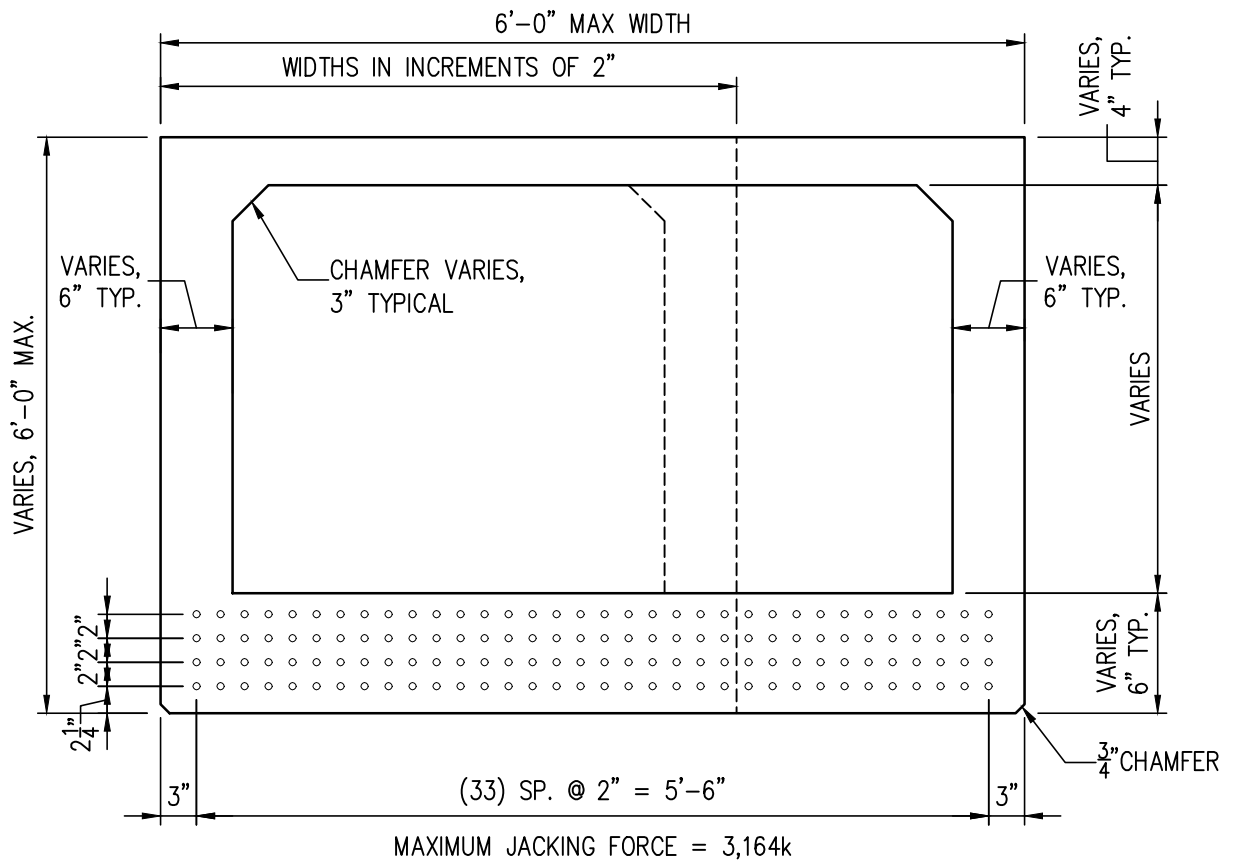
PlumCreek
STRUCTURES
 9160 NORTH MOORE RD.
 LITTLETON, CO 80125
 (303) 471-1569

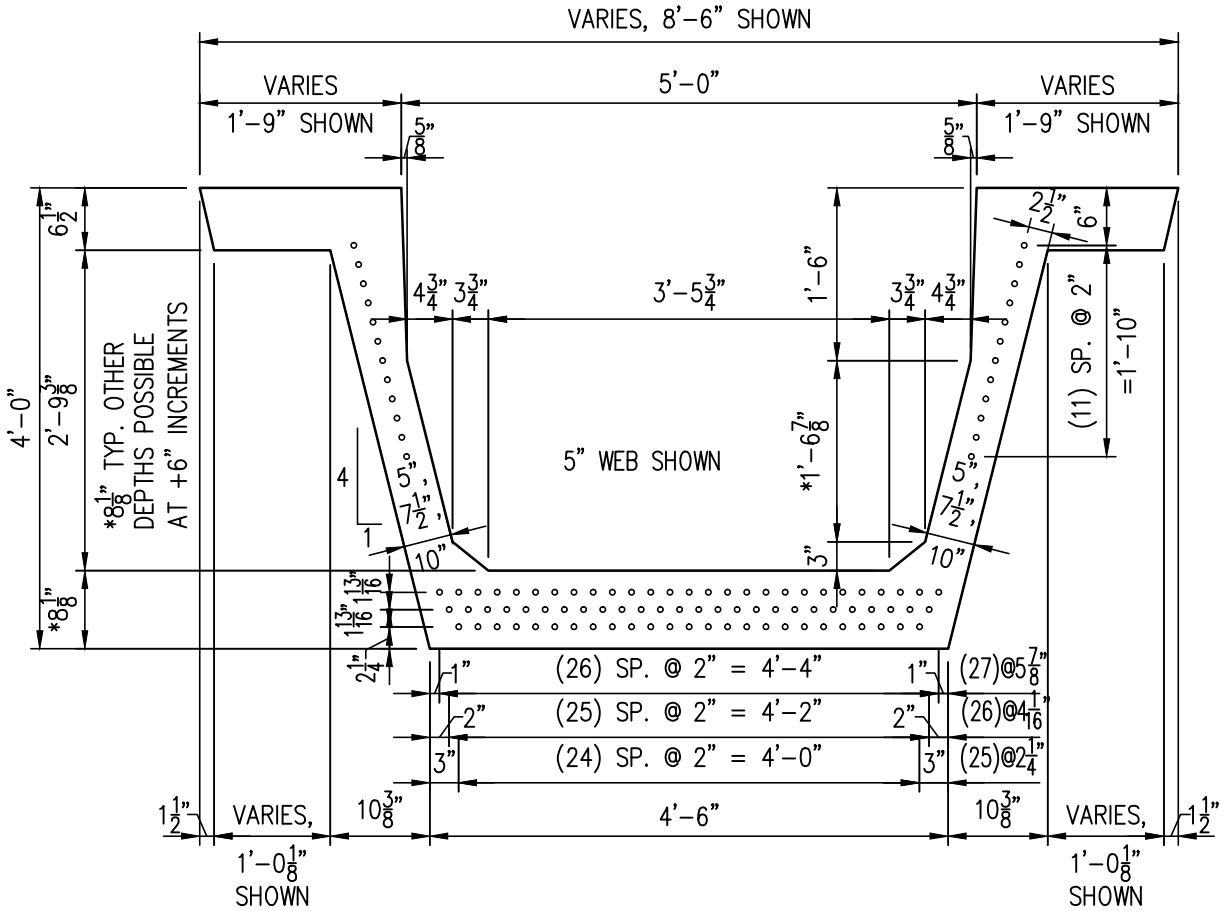
REVISIONS	
△	
△	

DRAWN BY: DPW
 DATE: 03.20.2015
 CHECKED BY: -
 DATE: -

BT END BLOCK PROPERTIES

JOB NUMBER
 -





Use 0.6"Φ, 270ksi, 7 wire, low lax strand
 Maximum Pulling Force = 3510 kips

Section Properties

Area= 1,105 in.²

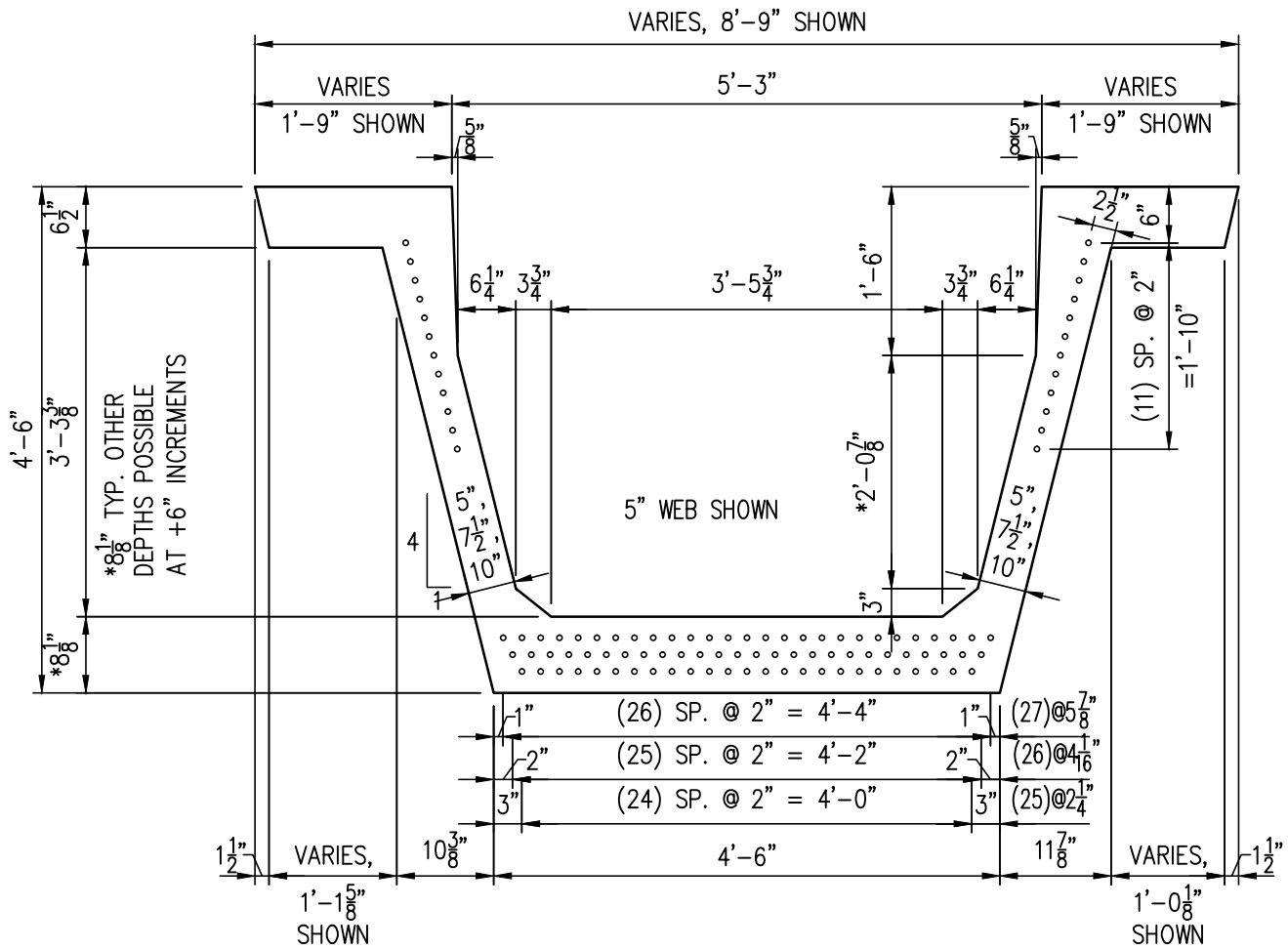
I= 330,599 in.⁴

Y_b= 21.32 in.

Y_t= 26.68 in.

S_b= 15,507 in.³

S_t= 12,391 in.³



Use 0.6"Φ, 270ksi, 7 wire, low lax strand
 Maximum Pulling Force = 3510 kips

Area= 1,167 in.²
 I= 446,747 in.⁴
 Y_b= 24.07 in.
 Y_t= 29.93 in.
 S_b= 18,558 in.³
 S_t= 14,928 in.³

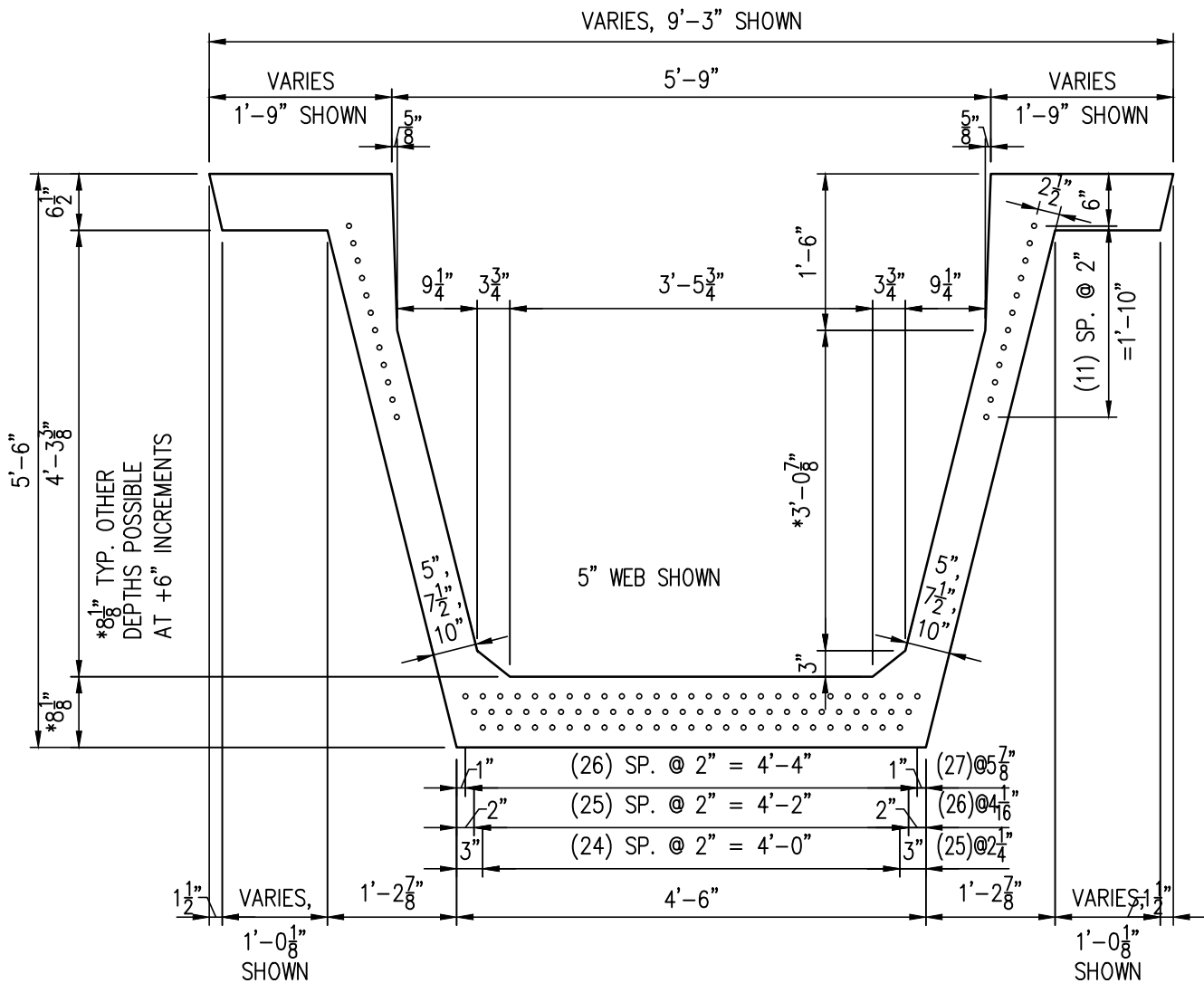
PlumCreek
STRUCTURES
 9160 NORTH MOORE RD.
 LITTLETON, CO 80125
 (303) 471-1569

REVISIONS
△
△

DRAWN BY: DPW
 DATE: 03.20.2015
 CHECKED BY: -
 DATE: -

TR-54 SECTION PROPERTIES

JOB NUMBER
 -



Use 0.6"Φ, 270ksi, 7 wire, low lax strand
 Maximum Pulling Force = 3510 kips

Section Properties
 Area= 1,290 in.²
 $I_x = 742,784 \text{ in.}^4$
 $Y_b = 29.65 \text{ in.}$
 $Y_t = 36.35 \text{ in.}$
 $S_b = 25,051 \text{ in.}^3$
 $S_t = 20,435 \text{ in.}^3$

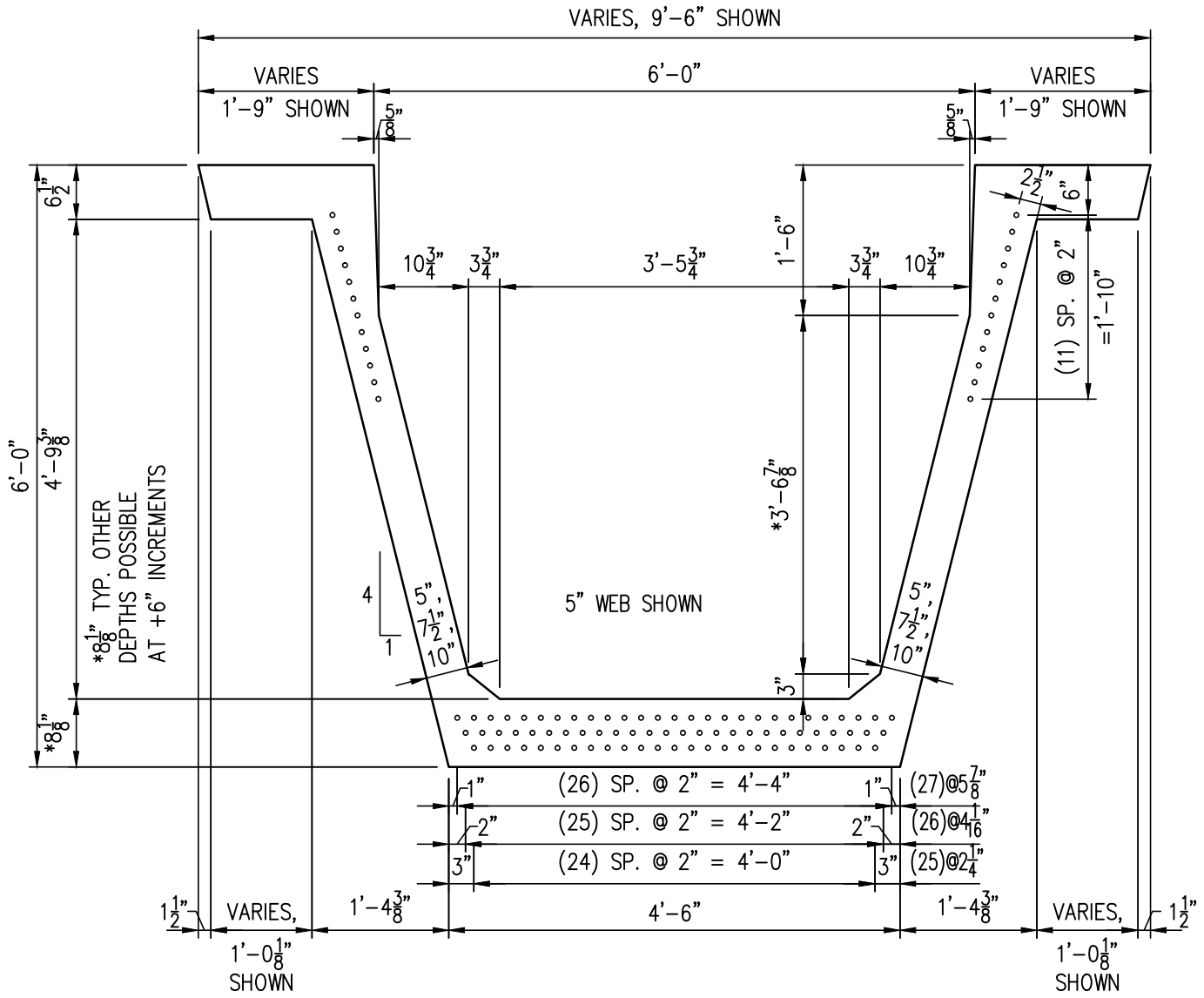
PlumCreek
STRUCTURES
 9160 NORTH MOORE RD.
 LITTLETON, CO 80125
 (303) 471-1569

REVISIONS	
△	
△	

DRAWN BY: DPW
 DATE: 03.20.2015
 CHECKED BY: -
 DATE: -

TR-66 SECTION PROPERTIES

JOB NUMBER
 -



Use 0.6"Φ, 270ksi, 7 wire, low lax strand
 Maximum Pulling Force = 3510 kips

Section Properties

- Area= 1,352 in.²
- I= 924,933 in.⁴
- Y_b= 32.47 in.
- Y_t= 39.53 in.
- S_b= 28,487 in.³
- S_t= 23,398 in.³

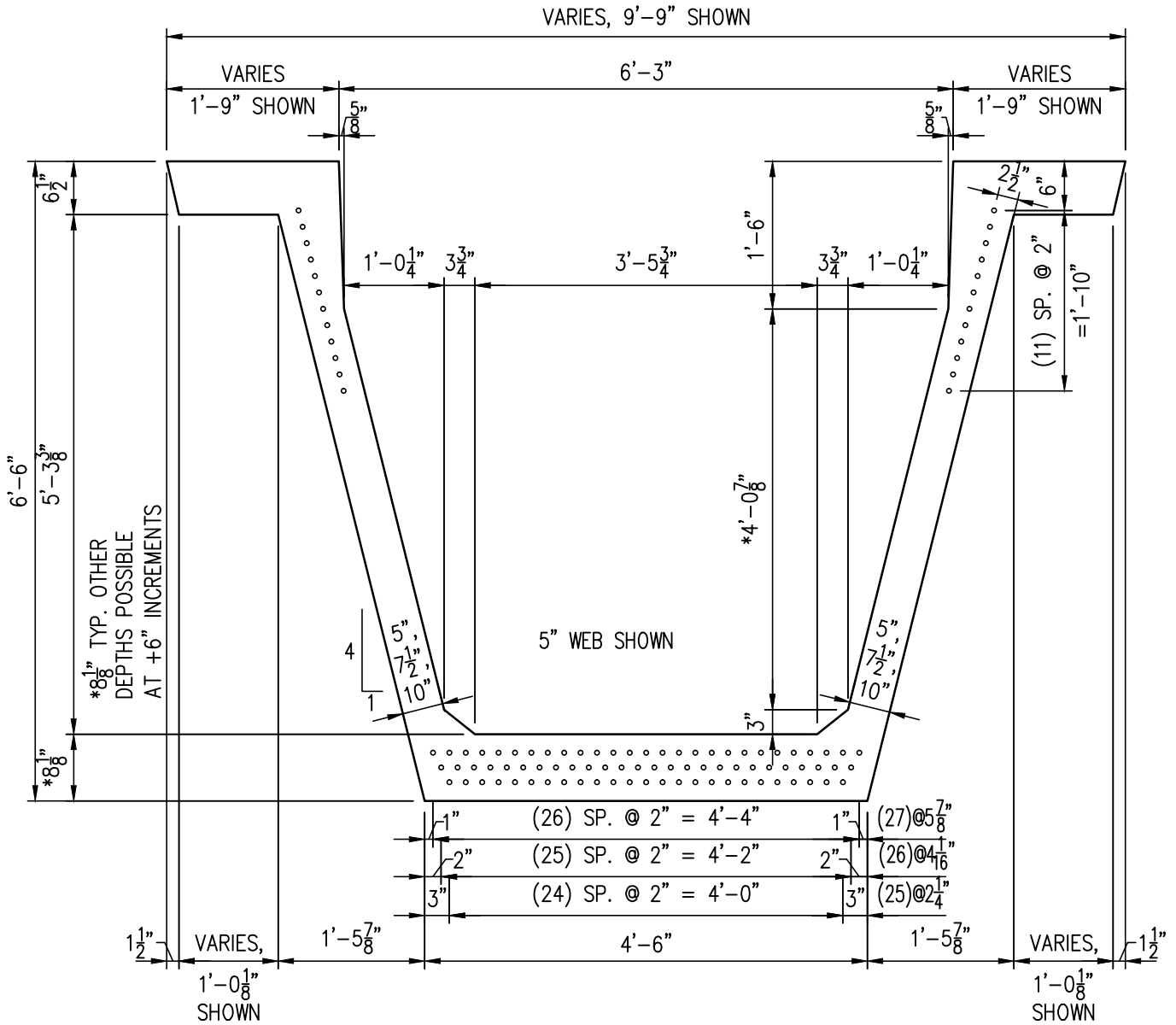
PlumCreek
STRUCTURES
 9160 NORTH MOORE RD.
 LITTLETON, CO 80125
 (303) 471-1569

REVISIONS	
△	
△	

DRAWN BY: DPW
 DATE: 03.20.2015
 CHECKED BY: -
 DATE: -

**TR-72 SECTION
 PROPERTIES**

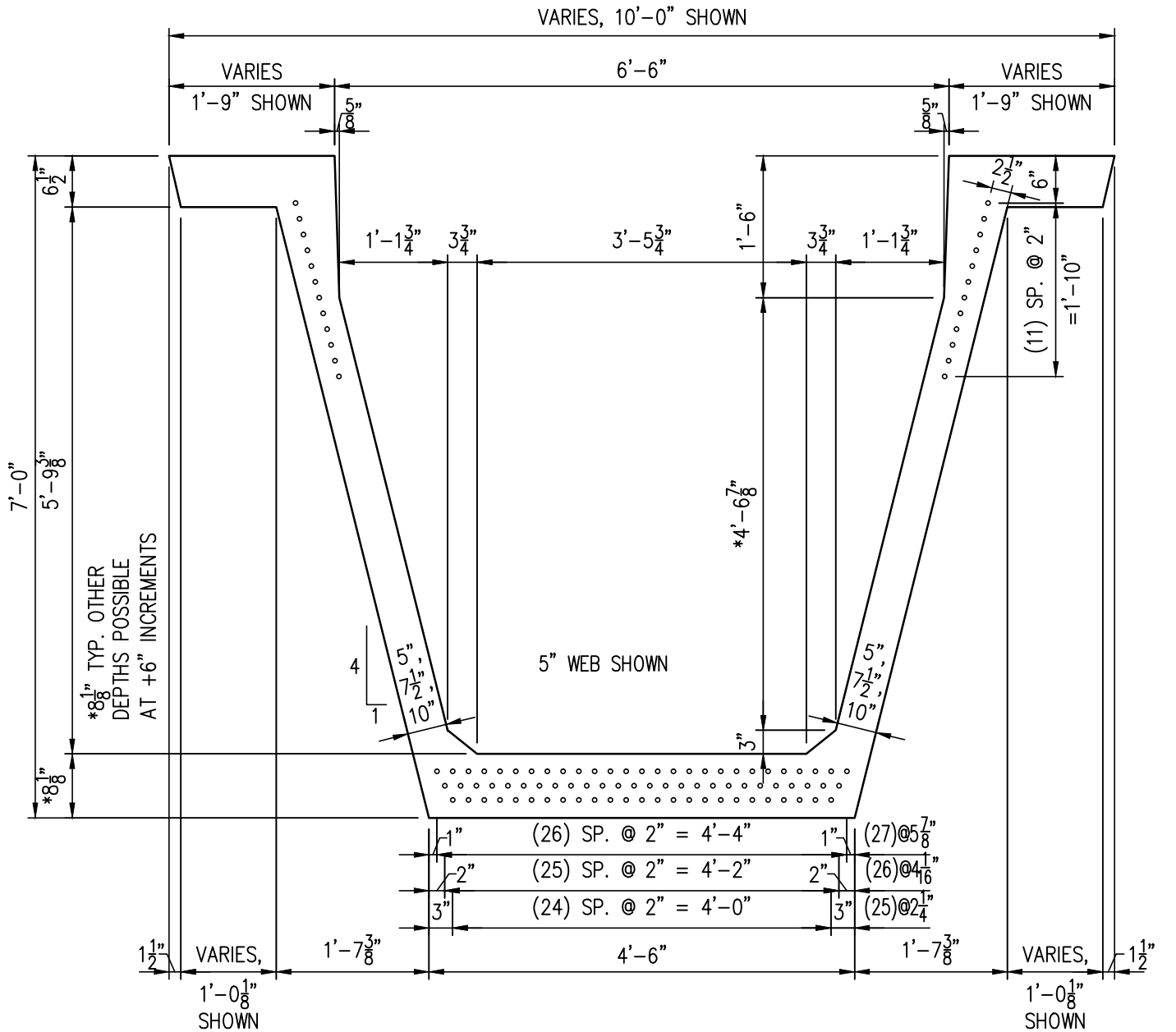
JOB NUMBER
 -



Use 0.6"Φ, 270ksi, 7 wire, low lax strand
 Maximum Pulling Force = 3510 kips

Section Properties

Area= 1,414 in.²
 $I_x = 1,131,338 \text{ in.}^4$
 $Y_b = 35.30 \text{ in.}$
 $Y_t = 42.70 \text{ in.}$
 $S_b = 32,047 \text{ in.}^3$
 $S_t = 26,497 \text{ in.}^3$



Use 0.6"Φ, 270ksi, 7 wire, low lax strand
 Maximum Pulling Force = 3510 kips

Section Properties
 Area= 1,476 in.²
 I= 1,363,121 in.⁴
 Y_b= 38.15 in.
 Y_t= 45.85 in.
 S_b= 35,730 in.³
 S_t= 29,730 in.³

PlumCreek
STRUCTURES
 9160 NORTH MOORE RD.
 LITTLETON, CO 80125
 (303) 471-1569

REVISIONS	
△	
△	

DRAWN BY: DPW
 DATE: 03.20.2015
 CHECKED BY: -
 DATE: -

TR-84 SECTION PROPERTIES

JOB NUMBER
 -

